

WS 0010 – Single phase active energy meters

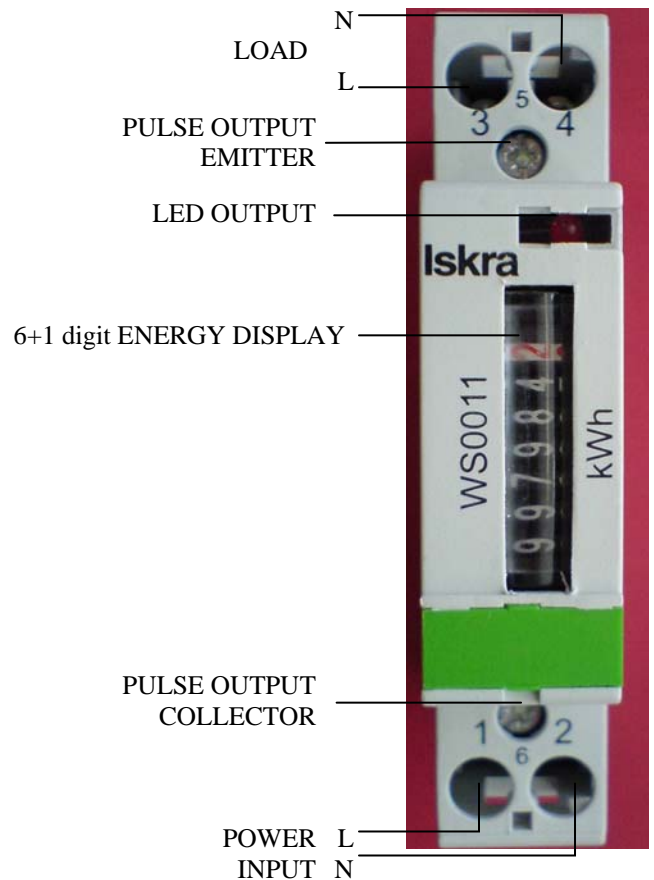
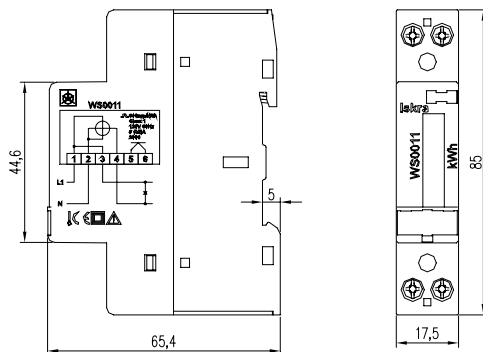
WS 0011 – Single phase active energy meters

FEATURES

- Single phase direct connected DIN-rail mounting meter
- Class of meter 1 according EN62053-21 and EN62052-11
- Maximum current 32A (I_{max})
- Base current (I_b) 5A
- Starting current 0,004 I_b
- 120V or 230V rated system voltage input (U_n)
- Voltage operating range -20%...+15% U_n
- Reference frequencies 50 or 60 Hz
- Power consumption voltage circuit < 6VA at U_n
- Power consumption current circuit < 0.1W at I_{max}
- Temperature range climatic condition as indoor meter according IEC62051-11
- Display 6+1 digit (100Wh resolution)
- Red LED for indication of energy flow and testing
- LED rate for energy flow 640 p/kWh
- Pulse output (WS0011 only) according to EN62053-31:2001
- Pulse output rate 640 p/kWh
- Pulse output type optocoupler transistor-open collector

WS 0010 and WS 0011 are electronic single phase active energy meters. Meters measure positive active energy directly in 2-wire networks. There are two versions, one with pulse output (WS 0011) and the other without pulse output (WS 0010). Accuracy of the meters is class 1, according to the standard EN SIST 62053-21 for active energy meter. Meters can be mounted on DIN-rail (1 pitch).

DIMENSIONAL DRAWINGS



INSTALLATION

(see figures below)

- For monitoring purpose only
- Rail mounting according DIN EN50022
- Power contacts capacity 2,5...10mm²
- Connection screws M3,5
- Pulse output contact capacity 1...2,5mm²
- Pulse output screws M3
- Max torque 1,2Nm

